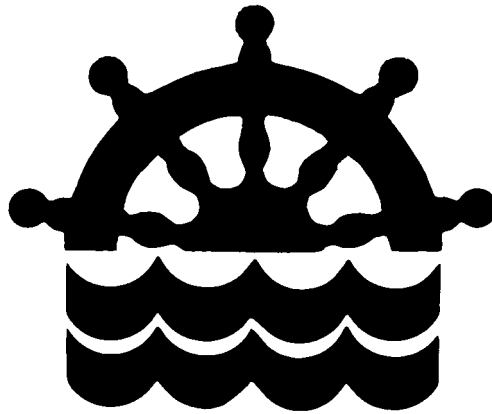


C-2500 DISTRIBUTOR UNIT

Operation
and
Installation
manual

V.2 February 2001



SCAN-STEERING

CONTENTS

1. C-2500 - a brief description.	3
2. Connection.	4
3. Configuration.	5
4. Technical data.	6
5. Dimension.	7

1. C-2500 - a brief description.

C-2500 Distributor unit is designed to withstand the conditions on a ship. The C-2500 distributor unit is delivered in a metal box with 4 mounting holes.

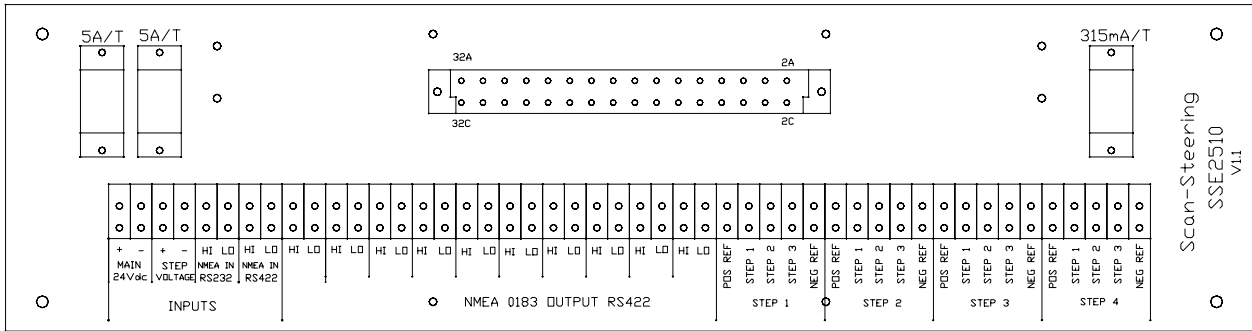
The C-2500 is used when there is a need for many NMEA outputs and high power consumption step by step output as the unit is capable of delivering 2A on each step output.

2. Connection.

The C-2500 need tree input one 24V dc, one NMEA0183 RS422 and one STEP voltage reference. The connection is made on the bottom PCB as show on drawing no. 1

The C-2500 has 10 NMEA0183 RS422 output and 4 STEP by STEP 6 or 12 step/degree, each step output can deliver 2A continues.

The step can be with negative or positive reference depending on costumers choice.



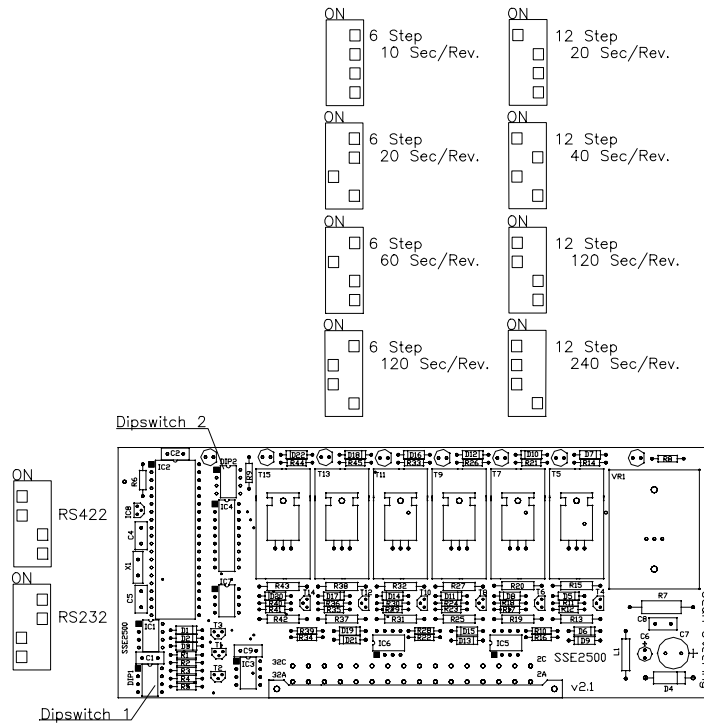
Drawing No. 1.

Scan-Steering
SSE2510
VII

3. Configuration.

On the C-2500 there are two jumper each with 4 positions. Jumper DIP1 is for selection between RS232 or RS422, Jumper DIP2 is for selection of 6 or 12 step and the output speed of the step.

For configuration of DIP switches please see drawing no. 2.

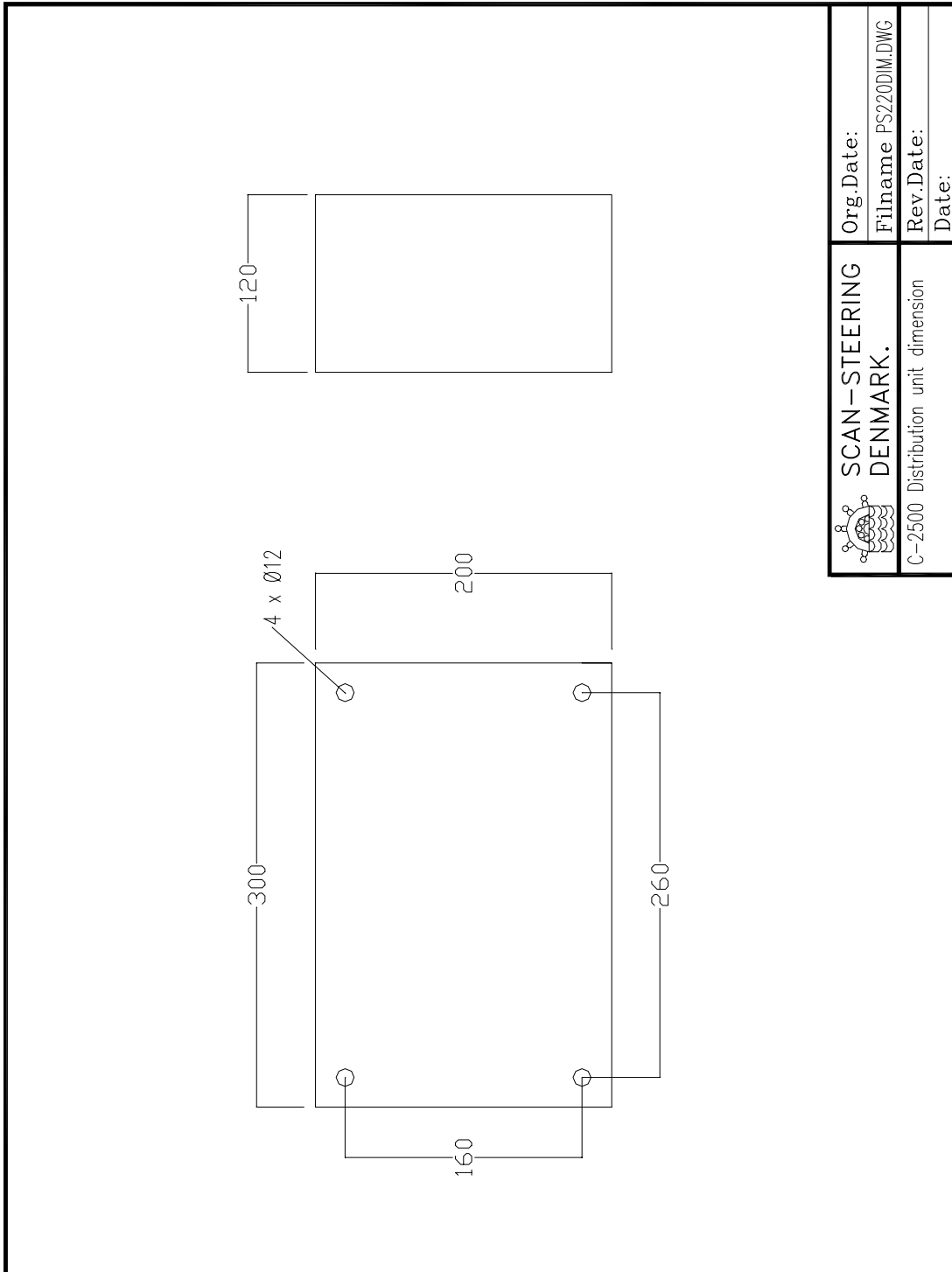


Drawing No. 2.

4. Technical data.

Power input:	24Vdc
STEP voltage reference input:	12-85V
Input signal:	NMEA0183 RS422 or RS232 \$xxHDT,xxx.x,T<CR><LF> \$xxHDM,xxx.x,M<CR><LF> \$xxHCC,xxx.x<CR><LF>
Output:	
NMEA0183:	RS422
STEP by STEP:	6 or 12 step/degree 2A on each step output
Fuse:	2 x 5A 1 x 315mA

5. Dimension.



 SCAN-STEERING DENMARK.	Org.Date:
	Filename PS220DIM.DWG
C-2500 Distribution unit dimension	Rev.Date:
	Date:

Drawing No. 3.