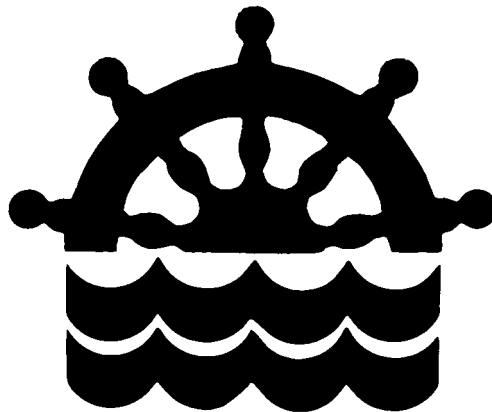


DE180 DIGITAL REPEATER

Operation
and
Installation
manual

V.3 February 2001



SCAN-STEERING

CONTENTS

- 1. DE 180 - a brief description..... 3
- 2. DE 180 Repeater overview..... 4
 - 2.1. DIMMER..... 4
- 3. Configuration..... 5
 - 3.1. Configuring Input signals..... 5
 - 3.2. Last digit on/off..... 5
- 4. Technical data..... 6
- 5. Dimensions..... 7
- 6. Mounting, Bracket or Panel..... 8

1. DE 180 - a brief description.

The DE 180 is a digital repeater, designed to withstand the conditions on a ships bridge. The DE-180 is delivered with a bracket for mounting. It is also possible to panel mount the repeater.

The repeater is provided with red illuminated digit for clear long distance course reading. A dimmer button is located on the front.

The DE 180 repeater only needs 24V DC power and a NMEA 0183 RS422 or RS232 signal.

2. DE 180 Repeater overview.

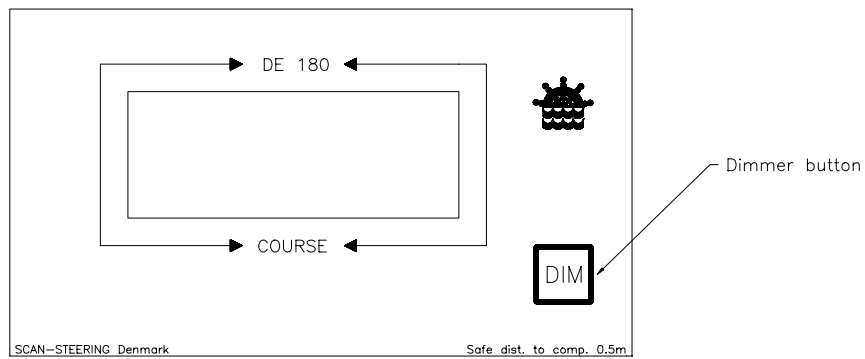


Fig. 1.

2.1. DIMMER.

The dimmer button is located on the front of the DE 180 digital repeater. It is possible to dim the DE 180 repeater to 5 different levels of light intensity.

3. Configuration.

3.1. Configuring Input signals.

The DE180 Digital repeater can be configured for using NMEA0183 RS232 or RS422 input. This is done by setting the DIPSWITCH on the PCB. Look at fig.2 for setting, fig.3 for location of dipswitch.

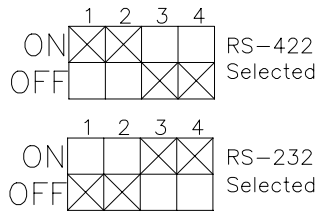


Fig. 2.

Note : In case the repeater is not receiving any input signal, the digits will be flashing.

3.2. Last digit on/off.

It is possible to switch the last digit on and off, this is done by opening or closing jumerl (JMP1). In closed position the last digit will be on. In open position the last digit will be off. JMP1 location is shown on fig.3

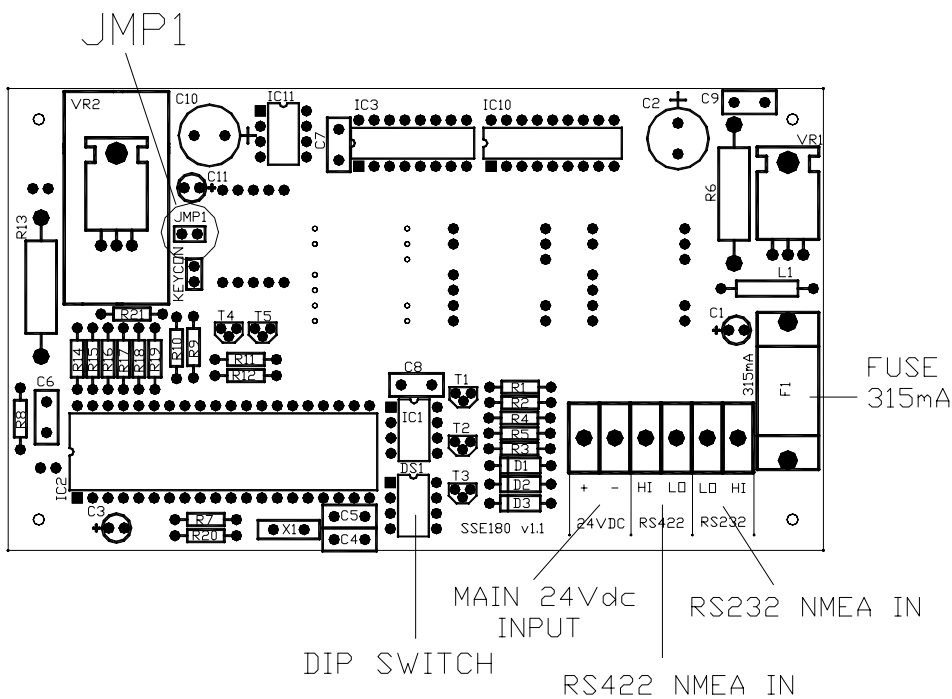
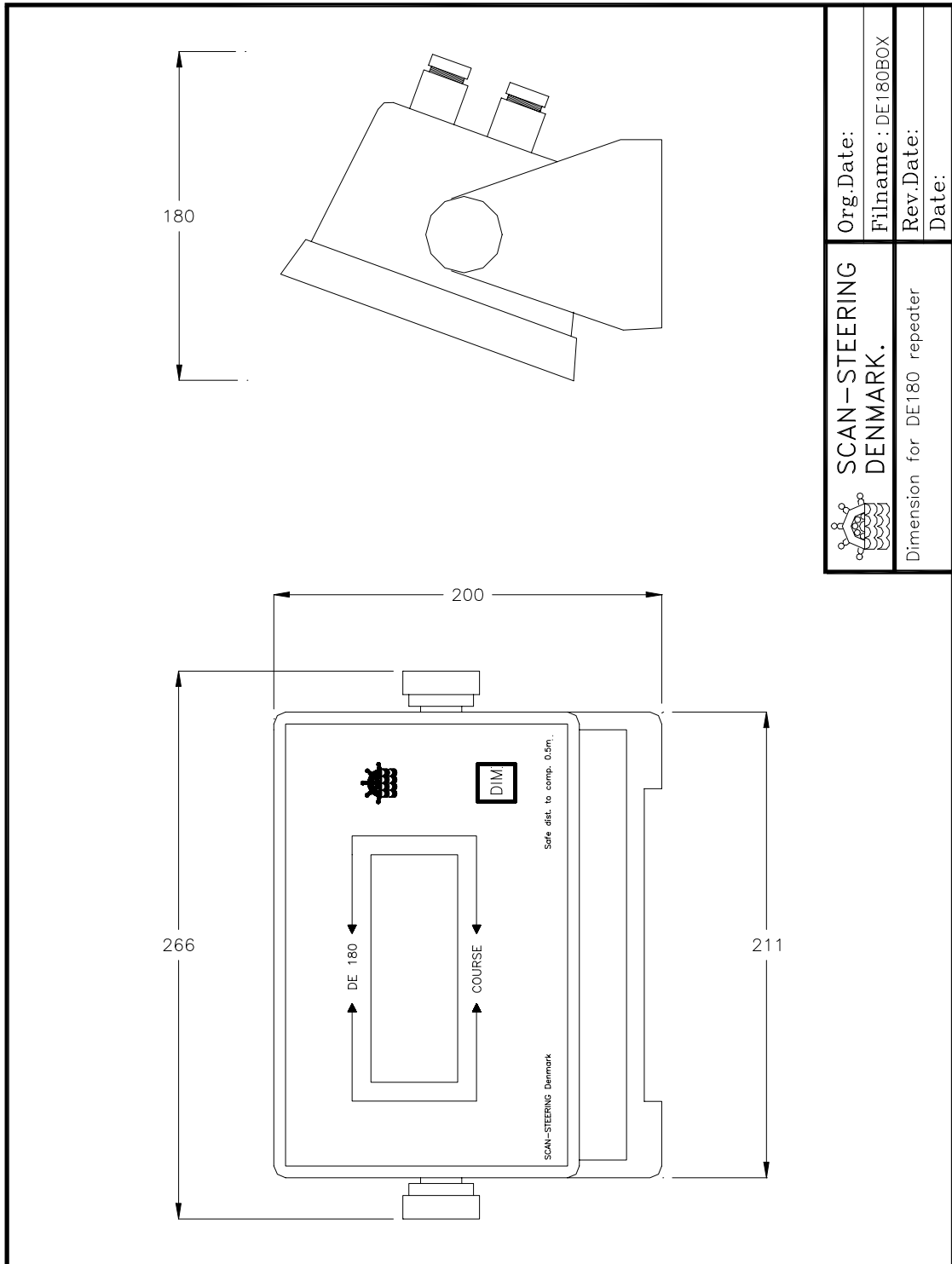


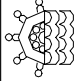
Fig. 3.

4. Technical data.

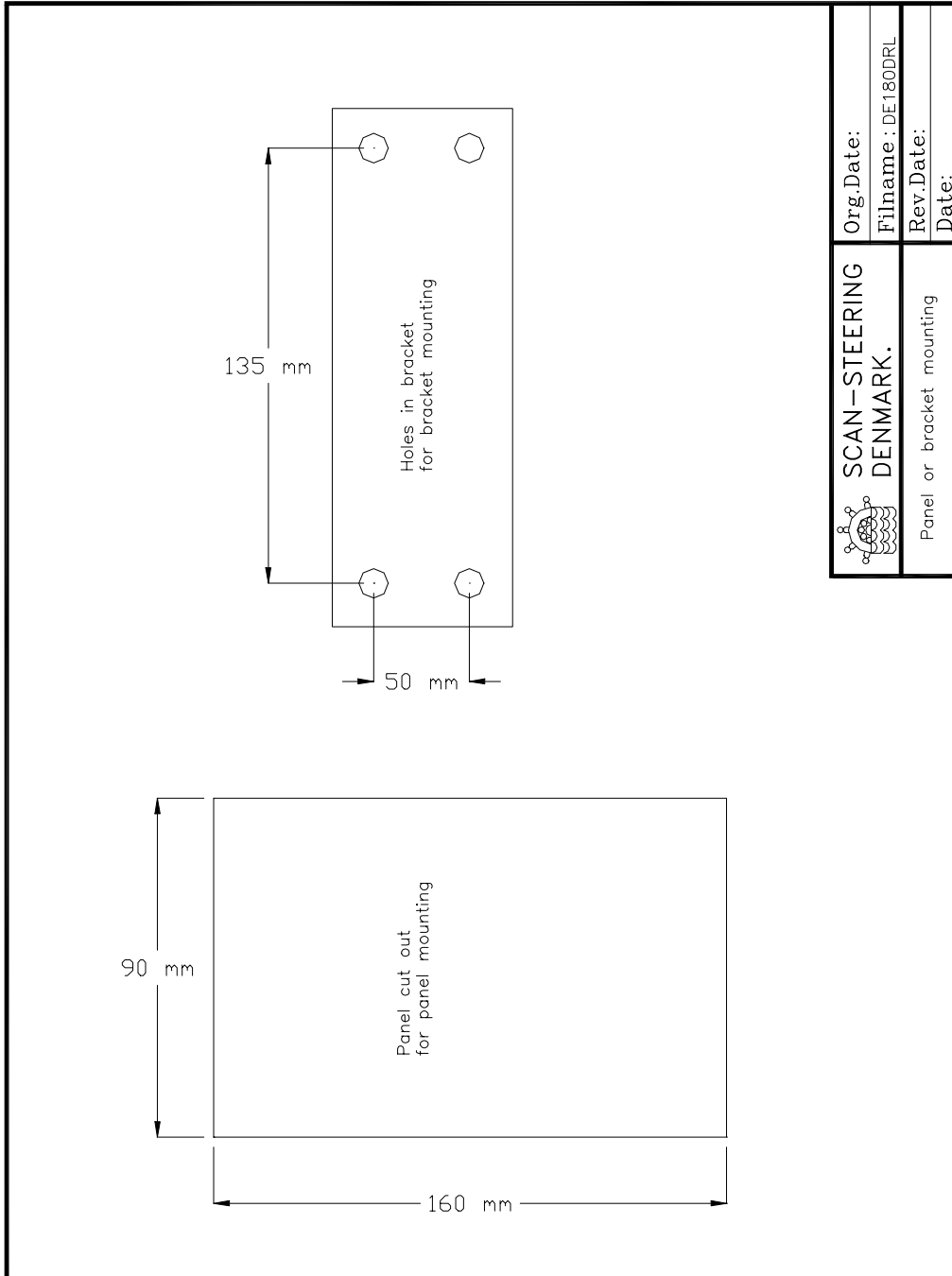
Input signal:	NMEA183 RS232 or RS422
	\$xxHDT,xxx.x,T<CR><LF> \$xxHDM,xxx.x,M*x<CR><LF> \$xxHCC,xxx.x<CR><LF>
Accuracy:	0.1 deg.
Power input:	24V Dc
Fuse:	315mA fuse (fig.3 shows location)

5. Dimensions.



 SCAN-STEERING DENMARK.	Org.Date:
	Filename: DE180BOX
Dimension for DE180 repeater	Rev.Date:
	Date:

6. Mounting, Bracket or Panel.



	Org.Date:	
	Filename : DE180DRL	
	Rev.Date:	
Panel or bracket mounting		Date: